



READY Nevada County Extreme Climate Event & Mobility Plan



**Presentation of Final Plan
May 18, 2022**

Agenda

1. Project Background & Goals
2. Outreach Summary
3. Plan Components
4. Findings

Project Background & Goals

Project Purpose

Build upon ongoing coordination and emergency planning efforts of the Nevada County, Grass Valley, Nevada City, and Truckee

Identify climate-related challenges to the transportation network in Nevada County and strategies to address them

Create a blueprint to respond to:

Flooding

Wildfires

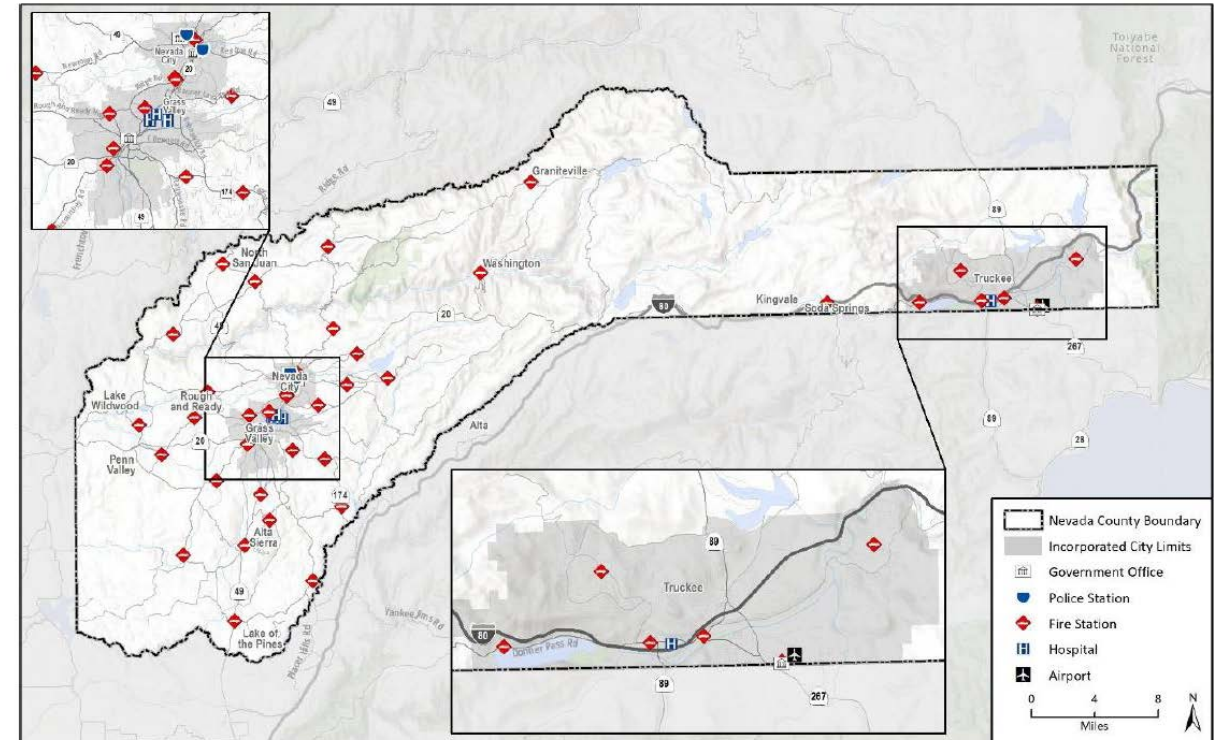
Increasing temperatures

Earthquakes

Landslides

Other climate events that may affect transportation and evacuation

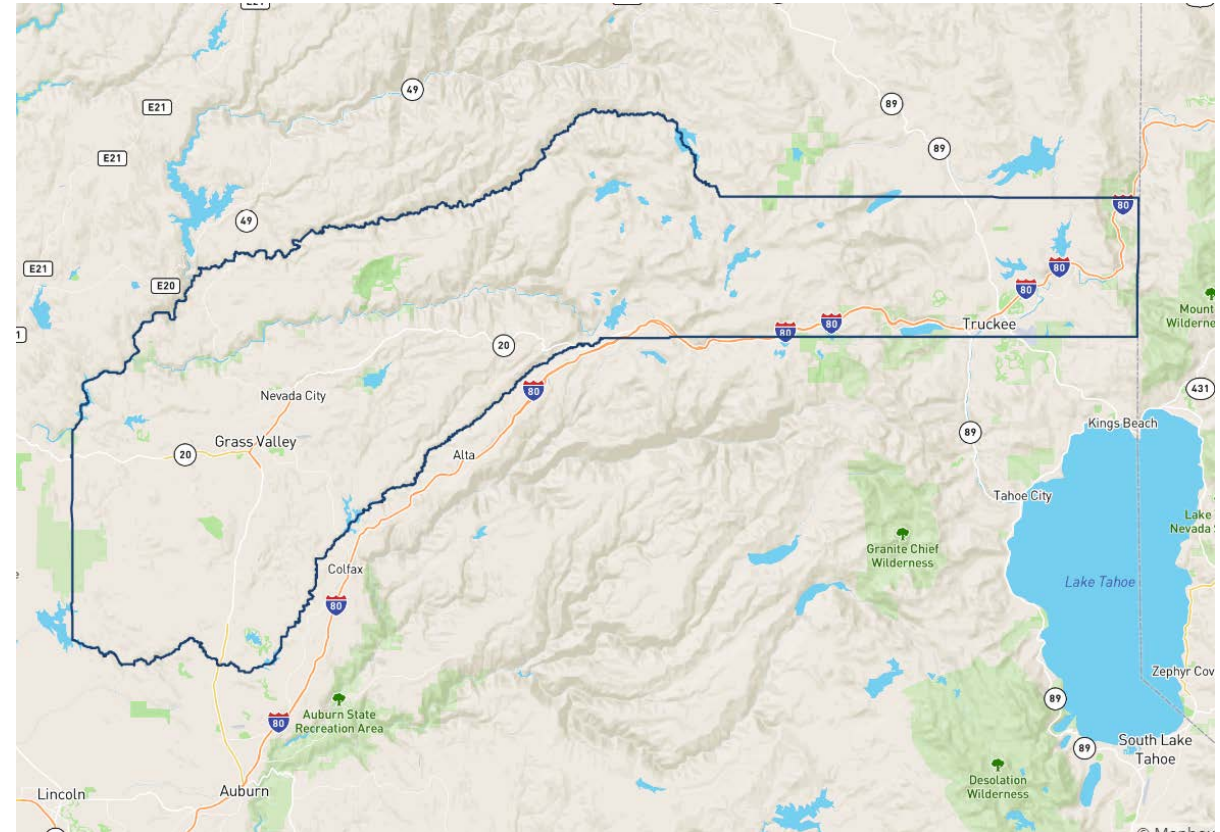
Figure 9 Critical Facilities in Nevada County



Basemap provided by Esri and its licensors © 2021.
Additional data provided by Fehr and Peers, 2021; Nevada County, 2021.

Project Goals

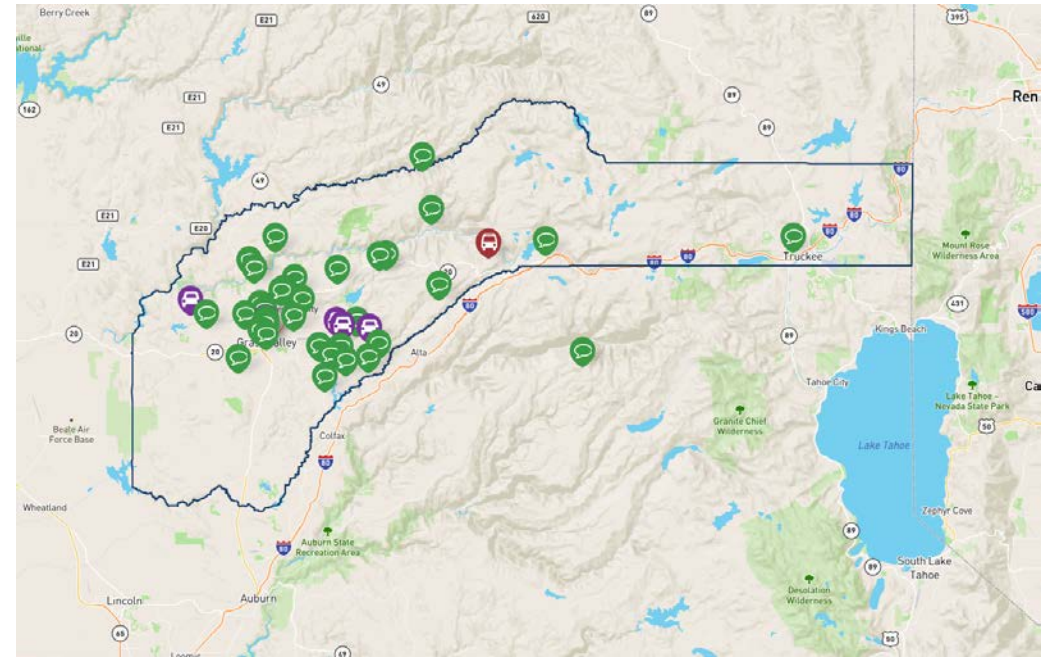
1. Understand the vulnerability of Nevada County transportation infrastructure and systems to extreme weather and climate events
2. Develop strategies that will allow Nevada County to adapt to changing conditions and withstand, respond to, and recover from extreme climate events
3. Gather community feedback to develop strategies that meet community needs
4. Protect the rural qualities and historic character of Nevada County, while enabling the agencies within the County to be prepared for extreme climate events



Outreach Summary

Outreach

- **Virtual Workshop Series (3)**
 - May 2021, November 2021, April 2022
- **Project Advisory Committee (PAC)**
 - 9 members, including reps from Fire, OES, CHP, Planning, Transit Services and Public Works
 - Meetings: April 2021, October 2021, March 2022
- **Key Stakeholder Outreach**
 - February – March 2021: Sent targeted invitations to invite stakeholders to provide online feedback
- **Website (including survey/map)**
 - March – July 2021: Survey/mapping exercise to identify challenges, barriers and concerns
 - April 13 – May 1, 2022: Draft Plan comment period



Plan Components

Plan Components

Existing Conditions

- Overview of climate risks and vulnerabilities
- Review of existing adaptation framework (state/local plans)

Impact Assessment

- For each climate factor, potential impacts are organized by severity, frequency and geographic extent

Adaptation Strategies, Policies & Concepts

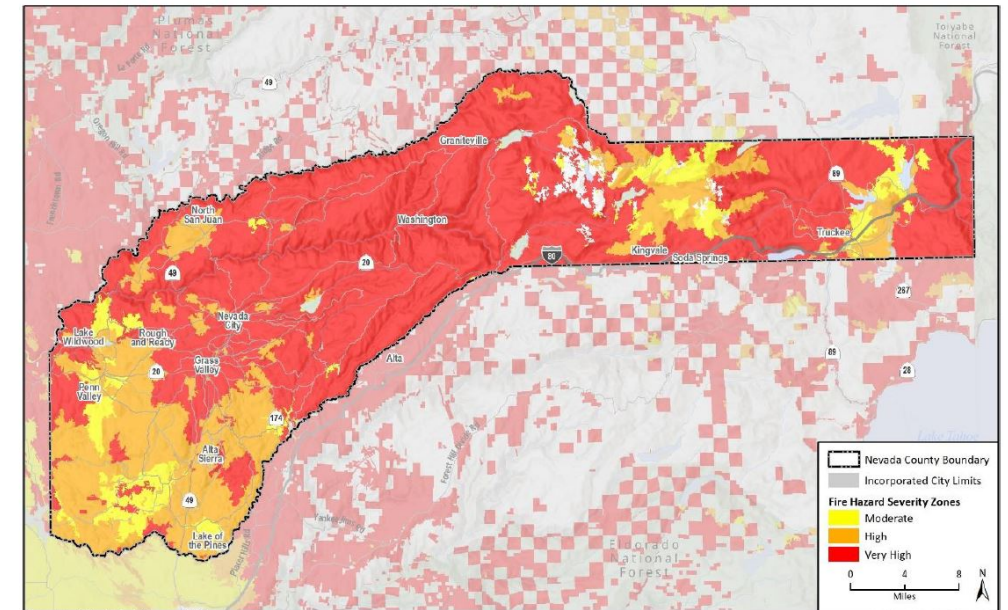
Implementation

- Funding opportunities

Appendix

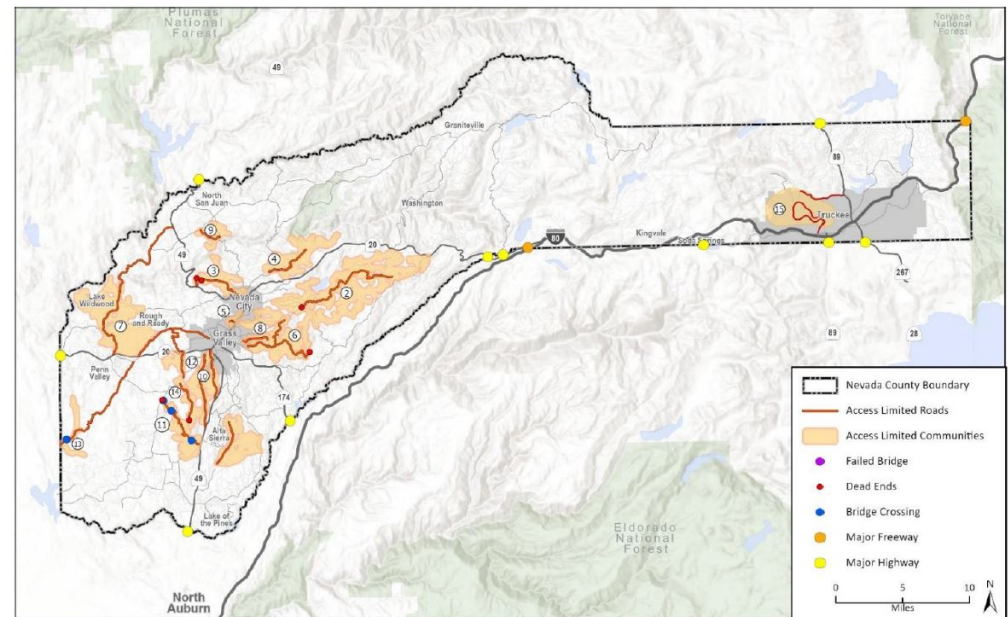
- Detailed risk assessment maps

Figure 29 Fire Hazard Severity Zones in Nevada County



Basemap provided by Esri and its licensors © 2021.
Additional data provided by CA FIRE, 2021.

Figure A-9 Access Limited Roads and Communities



Basemap provided by Esri and its licensors © 2021.
Additional data provided by Fehr and Peers, 2021.

Findings

Solutions & Concepts

Solutions and concepts may fall into one of three (or multiple) strategy types:

Planning Strategies

Ensure future infrastructure design and investment priorities are climate adapted. These actions include the development of plans, updates to design standards, preparedness measures and prioritization processes.

Operational Strategies

Modify current practices and budget, building in a mitigation framework to adapt in the face of future extreme climate events.

Hardening Strategies

Involve modifications and adaptations to ensure infrastructure resiliency, including taking advantage of new and innovative opportunities.

Entities involved in implementation include:

- Local Public Works & Planning Departments
- Nevada County Sherriff's Department
- Local emergency services (including police departments and fire protection districts)
- Caltrans
- CHP
- Nevada County Transit Services Division
- Tahoe Truckee Area Regional Transit
- Union Pacific Railroad
- Amtrak
- Fire Safe Council of Nevada County
- CAL FIRE
- US Forest Service
- PG&E
- NCTC
- Local media stations

Adaptation Categories

Solutions

- **Evacuation Planning & Emergency Preparedness**

- Example: E.1: Solidify evacuation protocols and dissemination of routing information to residents

- **Wildfire**

- Example: W.1: Ensure continued coordination of hazardous fuels clearing and defensible space activities

- **Extreme Precipitation & Flooding**

- Example: P.3: Develop a regional prioritization of culvert upgrades and replacements

- **Crosscutting Strategies**

- Example: C.5: Improve communications to re-route travelers in the event of a weather/hazard prompted closure

Concepts

- **For When Roadway is Built or Rebuilt**
- **Upgrades**
- **Maintenance**



Questions? Comments?

Comments



Request for Plan Adoption

We request that the Nevada County Transportation Commission adopt the READY Nevada County Extreme Climate Event Mobility & Adaptation Plan



*** Thank You**

→ ghd.com